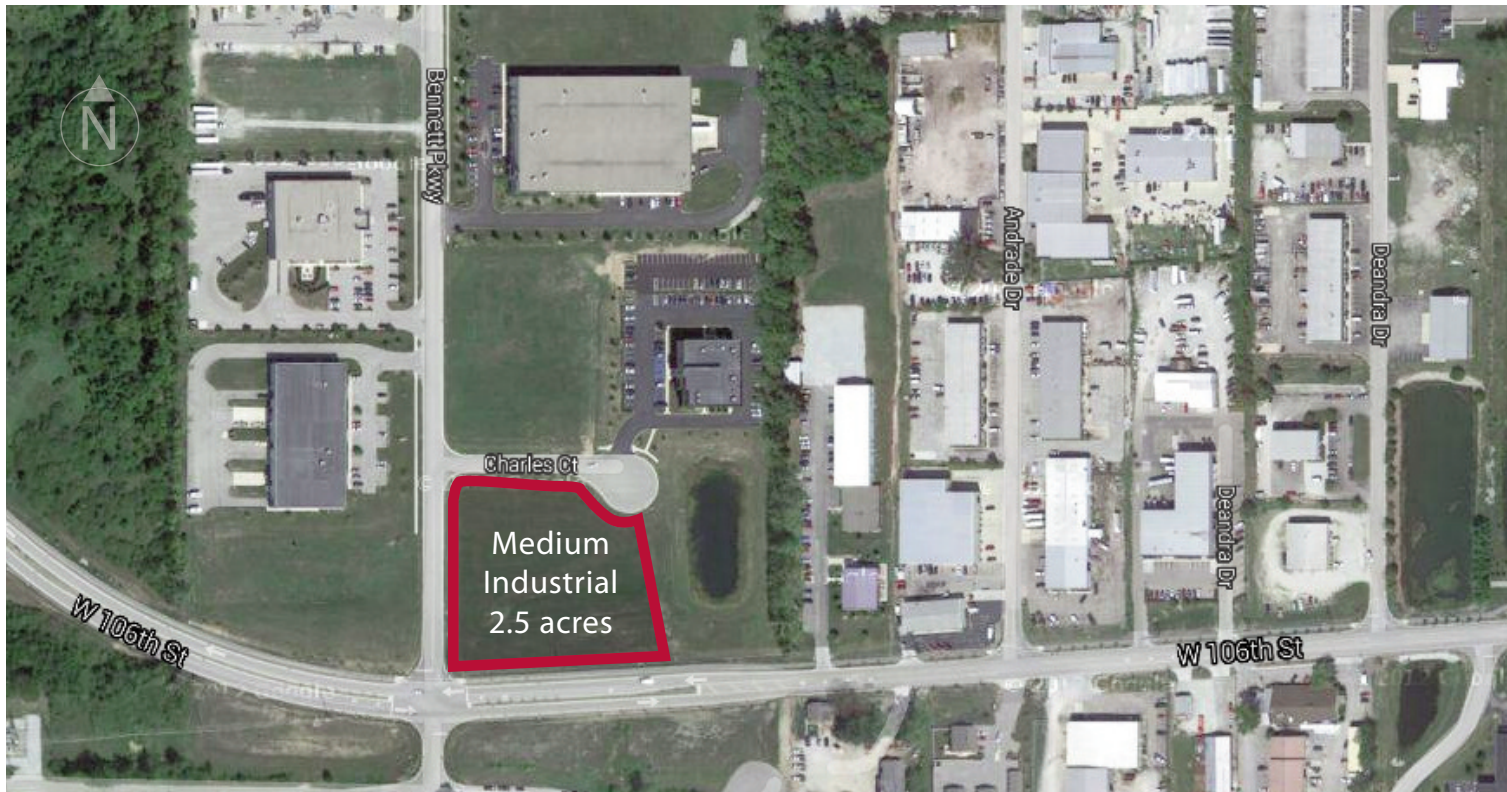


# BENNETT TECHNOLOGY PARK - OFFICE / INDUSTRIAL - 2.5 ACRES

## Land Available

www.reirealestate.com



Located on 106th Street between Zionsville and Michigan Road.

Positioned on the Northwest quadrant of the I-465 loop, this location offers easy access to several major thoroughfares.

**LOCATION:** Located just north of I-465 on 106th Street between Zionsville and Michigan Roads.

**ACCESS:** U.S. 421 and 106th Street

**LAND AVAILABLE:** 2.5 acres

**UTILITIES IN PLACE:**

- Cinergy
- Vectren
- Indianapolis Water Company,
- Clay Township Regional Waste

**NEIGHBORHOOD DEVELOPMENT / AMENITIES:**

- Marsh Supermarket
- Super Target
- Walgreens
- Close to shopping, restaurants, golf and hotels

Mike Napariu - 317.573.6045 / mnapariu@reirealestate.com

Ryan Wells - 317.573.6043 / rwells@reirealestate.com



REI REAL ESTATE SERVICES